

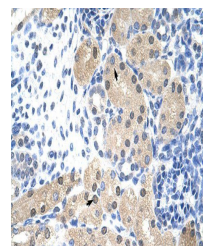
Product Datasheet

RNASEH2A antibody (orb324883)

Description	Rabbit polyclonal antibody to RNASEH2A
Species/Host	Rabbit
Reactivity	Canine, Equine, Goat, Human, Mouse, Porcine, Rat, Yeast, Zebrafish
Conjugation	Unconjugated
Tested Applications	IHC, WB
Immunogen	The immunogen is a synthetic peptide directed towards the middle region of human RNASEH2A
Target	RNASEH2A
Preservatives	Liquid. Purified antibody supplied in 1x PBS buffer with 0.09% (w/v) sodium azide and 2% sucrose.
Form/Appearance	Liquid. Purified antibody supplied in 1x PBS buffer with 0.09% (w/v) sodium azide and 2% sucrose.
Concentration	1.0 mg/ml
Storage	For short term use, store at 2-8°C up to 1 week. For long term storage, store at -20°C in small aliquots to prevent freeze-thaw cycles.
Note	For research use only
Protein Sequence	Synthetic peptide located within the following region: AQTILEKEAEDVIWEDSASENQEGLRKITSYFLNEGSQARPRSSHRYFLE
Clonality	Polyclonal
MW	33 kDa
Uniprot ID	O75792
NCBI	NP_006388
Expiration Date	12 months from date of receipt.



Western blot analysis of Jurkat cell lys...



Immunohistochemical staining of human Ki...