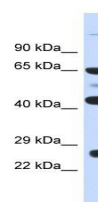


Product Datasheet

KLHL41 antibody (orb324522)

Description	Rabbit polyclonal antibody to KLHL41
Species/Host	Rabbit
Reactivity	Canine, Equine, Human, Mouse, Rat
Conjugation	Unconjugated
Tested Applications	WB
Immunogen	The immunogen is a synthetic peptide directed towards the middle region of HUMAN KLHL41
Target	KLHL41
Preservatives	Liquid. Purified antibody supplied in 1x PBS buffer with 0.09% (w/v) sodium azide and 2% sucrose.
Form/Appearance	Liquid. Purified antibody supplied in 1x PBS buffer with 0.09% (w/v) sodium azide and 2% sucrose.
Concentration	0.5 mg/ml
Storage	For short term use, store at 2-8°C up to 1 week. For long term storage, store at -2°C in small aliquots to prevent freeze-thaw cycles.
Note	For research use only
Protein Sequence	Synthetic peptide located within the following region: RFRLMTEKYFKDHVEKDDIIKSNPD LQKKIKVLKDAFAGKLPEPSKNAAK
Clonality	Polyclonal
MW	65kDa
Uniprot ID	O60662
Expiration Date	12 months from date of receipt.



Western blot analysis of human Fetal Mus...