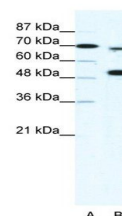


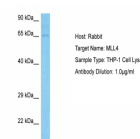
Product Datasheet

KMT2B antibody (orb324492)

| | |
|----------------------------|---|
| Description | Rabbit polyclonal antibody to KMT2B |
| Species/Host | Rabbit |
| Reactivity | Canine, Equine, Guinea pig, Human, Mouse, Rat, Yeast |
| Conjugation | Unconjugated |
| Tested Applications | WB |
| Immunogen | The immunogen is a synthetic peptide directed towards the N terminal region of human MLL4 |
| Target | KMT2B |
| Preservatives | Liquid. Purified antibody supplied in 1x PBS buffer with 0.09% (w/v) sodium azide and 2% sucrose. |
| Form/Appearance | Liquid. Purified antibody supplied in 1x PBS buffer with 0.09% (w/v) sodium azide and 2% sucrose. |
| Concentration | 1.0 mg/ml |
| Storage | For short term use, store at 2-8C up to 1 week. For long term storage, store at -2°C in small aliquots to prevent freeze-thaw cycles. |
| Note | For research use only |
| Protein Sequence | Synthetic peptide located within the following region: WAGPRVQRGRGRGRGRGWGSPRGCVPEEESSDGESDEEEFQGFHSDEDVA |
| Clonality | Polyclonal |
| MW | 64kDa |
| Uniprot ID | Q9UMN6 |
| Expiration Date | 12 months from date of receipt. |



Western blot analysis of HepG2 cell lysa...



Western blot analysis of Human THP-1 Who...