

Product Datasheet

Stathmin 1/STMN1 Antibody (orb308855)

Description

Stathmin 1/STMN1 Antibody

Species/Host

Rabbit

Reactivity

Human, Mouse, Rat

Conjugation

Unconjugated

Tested Applications

FC, ICC, IF, IHC, WB

Immunogen

A synthetic peptide corresponding to a sequence at the N-terminus of human Stathmin 1 (2-34aa ASSDIQVKELEKRASGQAFELILSPRSKESVPE), different from the related mouse sequence by one amino acid, and identical to the related rat sequence.

Form/Appearance

Lyophilized

Concentration

Adding 0.2 ml of distilled water will yield a concentration of 500 µg/ml.

Storage

Store at -20°C for one year from date of receipt. After reconstitution, at 4°C for one month. It can also be aliquotted and stored frozen at -20°C for six months. Avoid repeated freeze-thaw cycles.

Note

For research use only

Application notes

Tested Species: In-house tested species with positive results. By Heat: Boiling the paraffin sections in 10mM citrate buffer, pH6.0, for 20mins is required for the staining of formalin/paraffin sections. Other applications have not been tested. Optimal dilutions should be determined by end users. . Add 0.2ml of distilled water will yield a concentration of 500ug/ml.

Isotype

Rabbit IgG

Clonality

Polyclonal

MW

17303 MW

Uniprot ID

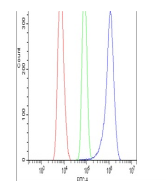
P16949

Dilution Range

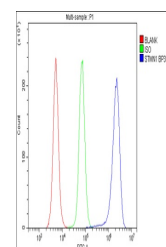
Western blot, 0.1-0.5µg/ml, Human, Mouse, Rat
Immunohistochemistry (Paraffin-embedded Section), 0.5-1µg/ml, Human, Mouse, Rat, By Heat
Immunocytochemistry/Immunofluorescence, 2µg/ml, Human
Flow Cytometry, 1-3µg/1x10⁶ cells, Human, Mouse, Rat

Expiration Date

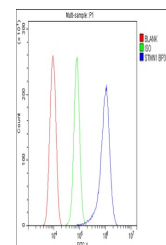
12 months from date of receipt.



Flow Cytometry analysis of THP-1 cells



Flow Cytometry analysis of RAW264.7 cell...



Flow Cytometry analysis of RH-35 cells