

Product Datasheet

Carbonic Anhydrase I/CA1 Antibody (orb308824)

Description

Carbonic Anhydrase I/CA1 Antibody

Species/Host

Rabbit

Reactivity

Human, Mouse, Rat

Conjugation

Unconjugated

Tested Applications

FC, ICC, IF, IHC, WB

Immunogen

E.coli-derived human CA1 recombinant protein (Position: D9-F261). Human CA1 shares 78.5% and 81% amino acid (aa) sequence identity with mouse and rat CA1, respectively.

Form/Appearance

Lyophilized

Concentration

Adding 0.2 ml of distilled water will yield a concentration of 500 µg/ml.

Storage

Store at -20°C for one year from date of receipt. After reconstitution, at 4°C for one month. It can also be aliquotted and stored frozen at -20°C for six months. Avoid repeated freeze-thaw cycles.

Note

For research use only

Application notes

Tested Species: In-house tested species with positive results. By Heat: Boiling the paraffin sections in 10mM citrate buffer, pH6.0, for 20mins is required for the staining of formalin/paraffin sections. Other applications have not been tested. Optimal dilutions should be determined by end users. . Add 0.2ml of distilled water will yield a concentration of 500ug/ml.

Isotype

Rabbit IgG

Clonality

Polyclonal

MW

28870 MW

Uniprot ID

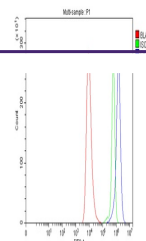
P00915

Dilution Range

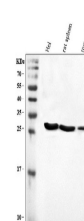
Western blot, 0.1-0.5µg/ml, Human, Mouse, Rat
Immunohistochemistry (Paraffin-embedded Section), 2-5µg/ml, Human, Mouse, Rat, By Heat
Immunocytochemistry/Immunofluorescence, 5 µg/ml, Human
Human Flow Cytometry, 1-3 µg/1x10⁶ cells, Human

Expiration Date

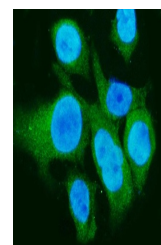
12 months from date of receipt.



Flow Cytometry analysis of HEL cells using anti-CA1 antibody.



WB analysis of CA1 using anti-CA1 antibody.



IF analysis of CA1 using anti-CA1 antibody.