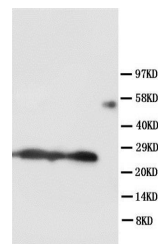


Product Datasheet

SFTPA1 Antibody (orb27561)

Description	SFTPA1 Antibody
Species/Host	Rabbit
Reactivity	Human, Rat
Conjugation	Unconjugated
Tested Applications	WB
Immunogen	A synthetic peptide corresponding to a sequence at the C-terminus of human SFTPA1 (221-236aa KEQCVEMYTDGQWNR), different from the rat sequence by two amino acids.
Form/Appearance	Liquid
Concentration	0.5-1mg/ml, actual concentration vary by lot. Use suggested dilution ratio to decide dilution procedure.
Storage	At -20°C for one year and at 4°C for one month from date of receipt. Avoid repeated freezing and thawing.
Note	For research use only
Application notes	Tested Species: In-house tested species with positive results. Predicted Species: Species predicted to be fit for the product based on sequence similarities. By Heat: Boiling the paraffin sections in 10mM citrate buffer, pH6.0, for 20mins is required for the staining of formalin/paraffin sections. Other applications have not been tested. Optimal dilutions should be determined by end users.
Isotype	Rabbit IgG
Clonality	Polyclonal
MW	26242 MW
Uniprot ID	Q8IWL2
Dilution Range	Western blot, 0.1-0.5µg/ml, Human, Rat
Expiration Date	12 months from date of receipt.



Western blot analysis of Lane 1: Rat Lun...