

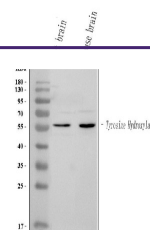
Product Datasheet

Tyrosine Hydroxylase/TH Antibody (orb259626)

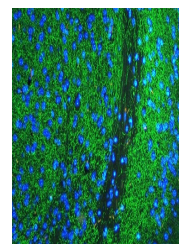
Description

Tyrosine Hydroxylase/TH Antibody

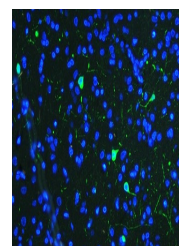
Species/Host	Rabbit
Reactivity	Mouse, Rat
Conjugation	Unconjugated
Tested Applications	IF, IHC, WB
Immunogen	A synthetic peptide corresponding to a sequence in the middle region of human Tyrosine Hydroxylase (193-222aa KVPWFPRKVSSELDKCHHLVTKFDPDLDDH), identical to the related mouse and rat sequences.
Form/Appearance	Lyophilized
Concentration	Adding 0.2 ml of distilled water will yield a concentration of 500 µg/ml.
Storage	Store at -20°C for one year from date of receipt. After reconstitution, at 4°C for one month. It can also be aliquotted and stored frozen at -20°C for six months. Avoid repeated freeze-thaw cycles.
Note	For research use only
Application notes	WB: The detection limit for Tyrosine Hydroxylase is approximately 0.1ng/lane under reducing conditions. Predicted Species: Species predicted to be fit for the product based on sequence similarities. Tested Species: In-house tested species with positive results. By Heat: Boiling the paraffin sections in 10mM citrate buffer, pH6.0, for 20mins is required for the staining of formalin/paraffin sections. Other applications have not been tested. Optimal dilutions should be determined by end users. . Add 0.2ml of distilled water will yield a concentration of 500ug/ml.
Isotype	Rabbit IgG
Clonality	Polyclonal
MW	58600 MW
Uniprot ID	P07101
Dilution Range	Western blot, 0.1-0.5µg/ml, Mouse, Rat Immunohistochemistry (Paraffin-embedded Section), 0.5-1µg/ml, Mouse, Rat, By Heat Immunocytochemistry/Immunofluorescence, 5µg/ml, Human Immunofluorescence, 5µg/ml, Human
Expiration Date	12 months from date of receipt.



WB analysis of Tyrosine Hydroxylase/TH u...



IF analysis of Tyrosine Hydroxylase/TH u...



IF analysis of Tyrosine Hydroxylase/TH u...