

Product Datasheet

SOD2 Antibody (orb259619)

Description
SOD2 Antibody
Species/Host

Rabbit

Reactivity

Human, Mouse, Rat

Conjugation

Unconjugated

Tested

ICC, IHC, WB

Applications
Immunogen

A synthetic peptide corresponding to a sequence at the C-terminus of human SOD2 (192-222aa QYKNVRPDYLKAIWNVINWENVTERYMACKK), different from the related mouse sequence by one amino acid, and from the related rat sequence by four amino acids.

Form/Appearance

Lyophilized

Concentration

Adding 0.2 ml of distilled water will yield a concentration of 500 µg/ml.

Storage

Store at -20°C for one year from date of receipt. After reconstitution, at 4°C for one month. It can also be aliquotted and stored frozen at -20°C for six months. Avoid repeated freeze-thaw cycles.

Note

For research use only

Application notes

WB: The detection limit for SOD2 is approximately 0.1ng/lane under reducing conditions. Tested Species: In-house tested species with positive results. By Heat: Boiling the paraffin sections in 10mM citrate buffer, pH6.0, for 20mins is required for the staining of formalin/paraffin sections. Other applications have not been tested. Optimal dilutions should be determined by end users. . Add 0.2ml of distilled water will yield a concentration of 500ug/ml.

Isotype

Rabbit IgG

Clonality

Polyclonal

MW

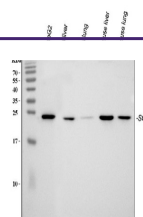
24722 MW

Uniprot ID
P04179
Dilution Range

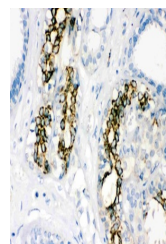
Immunohistochemistry (Paraffin-embedded Section), 0.5-1µg/ml, By HeatImmunocytochemistry, 0.5-1µg/mlWestern blot, 0.1-0.5µg/ml

Expiration Date

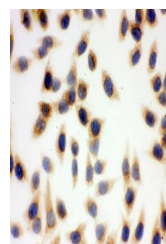
12 months from date of receipt.



WB analysis of SOD2 using anti-SOD2 anti...



IHC analysis of SOD2 using anti-SOD2 ant...



IHC analysis of SOD2 using anti-SOD2 ant...