

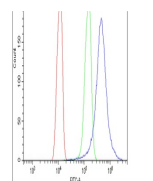
Product Datasheet

Glucose Transporter GLUT1/SLC2A1 Antibody (orb259612)

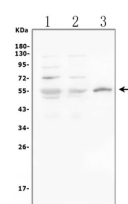
Description

Glucose Transporter GLUT1/SLC2A1 Antibody

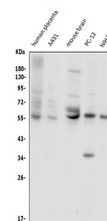
Species/Host	Rabbit
Reactivity	Human, Mouse, Rat
Conjugation	Unconjugated
Tested Applications	FC, ICC, IF, IHC, IHC-Fr, WB
Immunogen	E.coli-derived human SLC2A1 recombinant protein (Position: R92-V492). Human SLC2A1 shares 98% and 98.3% amino acid (aa) sequence identity with mouse and rat SLC2A1, respectively.
Form/Appearance	Lyophilized
Concentration	Adding 0.2 ml of distilled water will yield a concentration of 500 µg/ml.
Storage	Store at -20°C for one year from date of receipt. After reconstitution, at 4°C for one month. It can also be aliquotted and stored frozen at -20°C for six months. Avoid repeated freeze-thaw cycles.
Note	For research use only
Application notes	WB: The detection limit for SLC2A1 is approximately 0.1ng/lane under reducing conditions. Tested Species: In-house tested species with positive results. By Heat: Boiling the paraffin sections in 10mM citrate buffer, pH6.0, for 20mins is required for the staining of formalin/paraffin sections. Other applications have not been tested. Optimal dilutions should be determined by end users. . Add 0.2ml of distilled water will yield a concentration of 500ug/ml.
Isotype	Rabbit IgG
Clonality	Polyclonal
MW	54084 MW
Uniprot ID	P11166
Dilution Range	Western blot, 0.1-0.5µg/ml, Human, Mouse, Rat Immunohistochemistry (Paraffin-embedded Section), 0.5-1µg/ml, Human, Mouse, Rat, By Heat Immunohistochemistry (Frozen Section), 0.5-1µg/ml, Human, - Immunocytochemistry/Immunofluorescence , 2µg/ml, Human, - Flow Cytometry, 1-3 µg/1x10 ⁶ cells, Human
Expiration Date	12 months from date of receipt.



Flow Cytometry analysis of A431 cells us...



WB analysis of SLC2A1 using anti-SLC2A1 ...



WB analysis of SLC2A1 using anti-SLC2A1 ...