

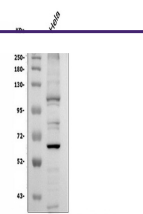
Product Datasheet

Plectin Antibody (orb259607)

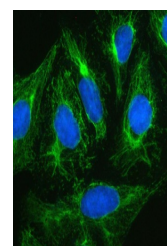
Description

Plectin Antibody

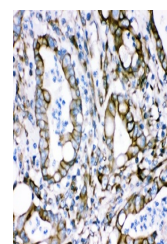
Species/Host	Rabbit
Reactivity	Human, Mouse, Rat
Conjugation	Unconjugated
Tested Applications	ICC, IF, IHC, WB
Immunogen	A synthetic peptide corresponding to a sequence in the middle region of human Plectin (2644-2671aa RFIEQEKAKLEQLFQDEVAKAQQLREEQ), different from the related mouse sequence by one amino acid, and from the related rat sequence by two amino acids.
Form/Appearance	Lyophilized
Concentration	Adding 0.2 ml of distilled water will yield a concentration of 500 µg/ml.
Storage	Store at -20°C for one year from date of receipt. After reconstitution, at 4°C for one month. It can also be aliquotted and stored frozen at -20°C for six months. Avoid repeated freeze-thaw cycles.
Note	For research use only
Application notes	WB: The detection limit for Plectin is approximately 0.1ng/lane under reducing conditions. Tested Species: In-house tested species with positive results. By Heat: Boiling the paraffin sections in 10mM citrate buffer, pH6.0, for 20mins is required for the staining of formalin/paraffin sections. Other applications have not been tested. Optimal dilutions should be determined by end users. . Add 0.2ml of distilled water will yield a concentration of 500ug/ml.
Isotype	Rabbit IgG
Clonality	Polyclonal
MW	531791 MW
Uniprot ID	Q15149
Dilution Range	Western blot, 0.1-0.5µg/ml, Human Immunohistochemistry (Paraffin-embedded Section), 2-5µg/ml, Human, Mouse, Rat, By Heat Immunocytochemistry/Immunofluorescence, 5µg/ml, Human
Expiration Date	12 months from date of receipt.



WB analysis of Plectin using anti-Plecti...



IF analysis of Plectin using anti-Plecti...



IHC analysis of Plectin using anti-Plecti...