

Product Datasheet

SSH3BP1/ABI1 Antibody (orb259593)

Description

SSH3BP1/ABI1 Antibody

Species/Host

Rabbit

Reactivity

Human, Mouse, Rat

Conjugation

Unconjugated

Tested

FC, ICC, IF, IHC, WB

Applications

Immunogen

A synthetic peptide corresponding to a sequence at the N-terminus of human ABI1 (151-175aa HGVKWLKAKHGNNQPARTGTLSTRTN), identical to the related mouse and rat sequences.

Form/Appearance

Lyophilized

Concentration

Adding 0.2 ml of distilled water will yield a concentration of 500 µg/ml.

Storage

Store at -20°C for one year from date of receipt. After reconstitution, at 4°C for one month. It can also be aliquotted and stored frozen at -20°C for six months. Avoid repeated freeze-thaw cycles.

Note

For research use only

Application notes

WB: The detection limit for ABI1 is approximately 0.1ng/lane under reducing conditions. Tested Species: In-house tested species with positive results. Predicted Species: Species predicted to be fit for the product based on sequence similarities. By Heat: Boiling the paraffin sections in 10mM citrate buffer, pH6.0, for 20mins is required for the staining of formalin/paraffin sections. Other applications have not been tested. Optimal dilutions should be determined by end users. . Add 0.2ml of distilled water will yield a concentration of 500ug/ml.

Isotype

Rabbit IgG

Clonality

Polyclonal

MW

55081 MW

Uniprot ID

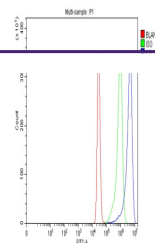
[Q8IZP0](#)

Dilution Range

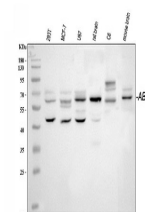
Western blot, 0.1-0.5µg/ml, Human, Mouse, Rat
Immunohistochemistry (Paraffin-embedded Section), 2-5µg/ml, Mouse, Rat, By Heat
Immunocytochemistry/Immunofluorescence, 5 µg/ml, Human
Flow Cytometry, 1-3 µg/1x10⁶ cells, Human

Expiration Date

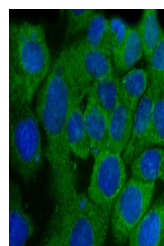
12 months from date of receipt.



Flow Cytometry analysis of K562 cells us...



WB analysis of SSH3BP1/ABI1 using anti-S...



IF analysis of SSH3BP1/ABI1 using anti-S...