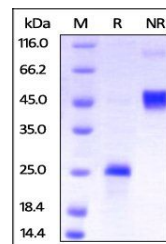


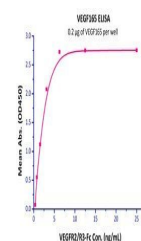
Product Datasheet

Human VEGF165 Protein (orb257924)

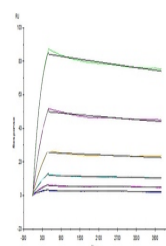
Description	VEGF165 is the most abundant splice variant of VEGF-A. VEGF165 is produced by a number of cells incl...
Reactivity	Human
Endotoxins	1.0 EU per µg
Conjugation	Unconjugated
Target	VEGF165
Preservatives	PBS, pH7.4
Form/Appearance	Powder
Storage	-20°C to -70°C for 12 months in lyophilized state; -70°C for 3 months under sterile conditions after reconstitution. For long term storage, the product should be stored at lyophilized state at -20°C or lower.
Tag	N-10×His
Note	For research use only
Application notes	This protein carries a polyhistidine tag at the N-terminus. The protein has a calculated MW of 21.1 kDa. The protein migrates as 25-27 kDa under reducing (R) condition (SDS-PAGE) due to glycosylation.
Purity	90%
Source	Human VEGF165, His Tag (orb257924) is expressed from human 293 cells (HEK293). It contains AA Ala 27 - Arg 191 (Accession # P15692-4).
MW	21.1 kDa
NCBI	NP_001165097.1
Expiration Date	6 months from date of receipt.



SDS-PAGE analysis of Human VEGF protein



Line graph illustrates about the sensi...



Avastin (Bevacizumab) captured on CM5 ch...