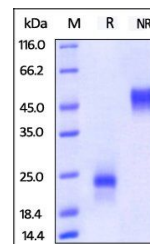


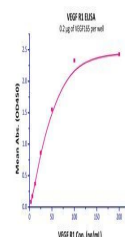
Product Datasheet

Human VEGF165 Protein (orb257923)

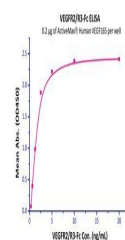
Description	VEGF165 is the most abundant splice variant of VEGF-A. VEGF165 is produced by a number of cells incl...
Reactivity	Human
Endotoxins	0.01 EU per µg
Conjugation	Unconjugated
Target	VEGF165
Preservatives	PBS, pH7.4
Form/Appearance	Powder
Storage	-20°C to -70°C for 24 months in lyophilized state; -70°C for 24 months under sterile conditions after reconstitution. For long term storage, the product should be stored at lyophilized state at -20°C or lower.
Tag	Native
Note	For research use only
Application notes	This protein carries no "tag". The protein has a calculated MW of 19.2 kDa. As a result of glycosylation, the protein migrates as 24 kDa (monomer) under reducing (R) condition, and 43-50 kDa (homodimer) under non-reducing (NR) condition (SDS-PAGE).
Purity	95%
Source	Human VEGF165, premium grade (orb257923) is expressed from human 293 cells (HEK293). It contains AA Ala 27 - Arg 191 (Accession # P15692-4).
MW	19.2 kDa
NCBI	NP_001165097.1
Expiration Date	6 months from date of receipt.



SDS-PAGE analysis of Human VEGF protein



Line graph illustrates about the sensitivity...



Line graph illustrates about the sensitivity...