

## Product Datasheet

### Mouse SCF / KITLG Protein (orb257825)

**Description** Mouse SCF, His Tag is expressed from human 293 cells (HEK293). It contains AA Lys 26 - Ala 189 (Acce...

**Reactivity** Mouse

**Endotoxins** 1.0 EU per µg

**Conjugation** Unconjugated

**Target** SCF

**Preservatives** PBS, pH7.4

**Form/Appearance** Powder

**Storage** -20°C to -70°C for 12 months in lyophilized state; -70°C for 3 months under sterile conditions after reconstitution. For long term storage, the product should be stored at lyophilized state at -20°C or lower.

**Tag** C-9×His

**Note** For research use only

**Application notes** This protein carries a polyhistidine tag at the C-terminus. The protein has a calculated MW of 19.5 kDa. The protein migrates as 19-30 kDa under reducing (R) condition (SDS-PAGE) due to different glycosylation.

**Purity** 95%

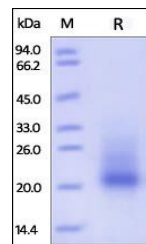
**Source** Mouse SCF, His Tag (orb257825) is expressed from human 293 cells (HEK293). It contains AA Lys 26 - Ala 189 (Accession # NP\_038626).

**MW** 19.5 kDa

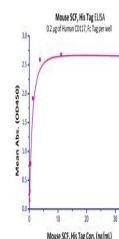
**Uniprot ID** **P20826**

**NCBI** **NP\_038626**

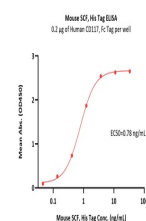
**Expiration Date** 6 months from date of receipt.



SDS-PAGE analysis of Mouse SCF protein



Line graph illustrates about the sensi...



Immobilized Human CD117, Fc Tag (Cat. No...