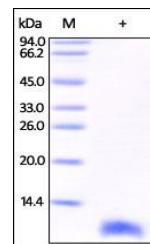


Product Datasheet

Human S100B Protein (orb257819)

| | |
|--------------------------|--|
| Description | S-100 protein beta chain (S100B), a member of the S-100 family, is also known as S-100 protein subuni... |
| Reactivity | Human |
| Endotoxins | 1.0 EU per µg |
| Conjugation | Unconjugated |
| Target | S100B |
| Preservatives | 50 mM Tris, 150 mM NaCl, pH8.0 |
| Form/Appearance | Powder |
| Storage | -20°C |
| Tag | N-6×His |
| Note | For research use only |
| Application notes | This protein carries a polyhistidine tag at the N-terminus. The protein has a calculated MW of 11.5 kDa. The protein migrates as 11 kDa under reducing (R) condition (SDS-PAGE). |
| Protein Sequence | NP_006263 |
| Purity | 95% |
| Source | Human S100B, His Tag (orb257819) is expressed from E.coli cells. It contains AA Ser 2 - Glu 92 (Accession # NP_006263). |
| MW | 11.5 kDa |
| NCBI | NP_006263 |
| Expiration Date | 6 months from date of receipt. |



SDS-PAGE
analysis of
Human
S100B
protein