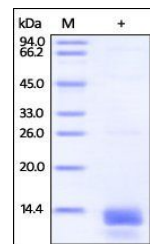


## Product Datasheet

### Human S100A14 Protein (orb257816)

<b>Description</b>	Protein S100-A14 (S100A14) is also known as S100 calcium-binding protein A14 (S114), which belongs to...
<b>Reactivity</b>	Human
<b>Endotoxins</b>	1.0 EU per µg
<b>Conjugation</b>	Unconjugated
<b>Target</b>	S100A14
<b>Preservatives</b>	50 mM Tris, 150 mM NaCl, pH8.0
<b>Form/Appearance</b>	Powder
<b>Storage</b>	-20°C
<b>Tag</b>	C-6×His
<b>Note</b>	For research use only
<b>Application notes</b>	This protein carries a polyhistidine tag at the C-terminus. The protein has a calculated MW of 12.5 kDa. The protein migrates as 13 kDa under reducing (R) condition (SDS-PAGE).
<b>Protein Sequence</b>	AAH05019
<b>Purity</b>	95%
<b>Source</b>	Human S100A14, His Tag (orb257816) is expressed from E.coli cells. It contains AA Met 1 - His 104 (Accession # Q9HCY8-1).
<b>MW</b>	12.5 kDa
<b>NCBI</b>	<b>AAH05019</b>
<b>Expiration Date</b>	6 months from date of receipt.



SDS-PAGE  
analysis of  
Human  
S100A14  
prote...