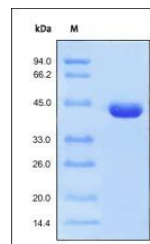


## Product Datasheet

### Recombinant Protein L (orb257805)

<b>Description</b>	Recombinant Protein L, His Tag, also known as Recombinant Peptostreptococcus magnus Protein L, was e...
<b>Reactivity</b>	Bacteria
<b>Endotoxins</b>	1.0 EU per µg
<b>Conjugation</b>	Unconjugated
<b>Target</b>	Protein L
<b>Preservatives</b>	100 mM NaH <sub>2</sub> PO <sub>4</sub> , pH8.5
<b>Form/Appearance</b>	Powder
<b>Storage</b>	-20°C
<b>Tag</b>	N-6×His
<b>Note</b>	For research use only
<b>Application notes</b>	Recombinant Protein L, His Tag is fused with the polyhistidine tag at N-terminus and a single cysteine at C-terminus. The reducing (R) protein migrates as a 45 kDa polypeptide. Protein L Protein can bind to VL-Kappa.
<b>Purity</b>	95%
<b>Source</b>	Recombinant Protein L, His Tag (orb257805) is expressed from E. coli cells.
<b>MW</b>	42.2 kDa
<b>Expiration Date</b>	6 months from date of receipt.



SDS-PAGE  
analysis of  
Protein L  
protein