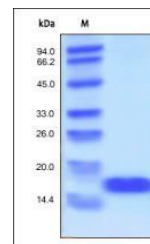


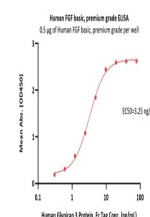
## Product Datasheet

### Human FGF basic Protein (orb257225)

<b>Description</b>	FGF basic is a member of the FGF family of at least 23 related mitogenic proteins which show 35-60% ...
<b>Reactivity</b>	Human
<b>Endotoxins</b>	0.01 EU per µg
<b>Conjugation</b>	Unconjugated
<b>Target</b>	FGF basic
<b>Preservatives</b>	PBS, pH7.4
<b>Form/Appearance</b>	Powder
<b>Storage</b>	-20°C to -70°C for 24 months in lyophilized state; -70°C for 3 months under sterile conditions after reconstitution. For long term storage, the product should be stored at lyophilized state at -20°C or lower.
<b>Tag</b>	Native
<b>Note</b>	For research use only
<b>Application notes</b>	This protein carries no "tag". The protein has a calculated MW of 16.5 kDa. The protein migrates as 17 kDa±3 kDa when calibrated against Star Ribbon Pre-stained Protein Marker under reducing (R) condition (SDS-PAGE).
<b>Purity</b>	95%
<b>Source</b>	Human FGF basic, premium grade (orb257225) is expressed from E. coli cells. It contains AA Pro 143 - Ser 288 (Accession # P09038-4).
<b>MW</b>	16.5 kDa
<b>NCBI</b>	<a href="#">AAI66646.1</a>
<b>Expiration Date</b>	6 months from date of receipt.



SDS-PAGE analysis of Human FGF basic pro...



Immobilized Human FGF basic, premium grade...