

Product Datasheet

SLC22A2 Antibody (orb251577)

Description

SLC22A2 Antibody

Species/Host

Rabbit

Reactivity

Human, Mouse, Rat

Conjugation

Unconjugated

Tested Applications

IHC, WB

Immunogen

A synthetic peptide corresponding to a sequence in the middle region of human SLC22A2 (524-555aa ETIEEAENMRPRKNKEKMIYLQVQKLDIPLN), different from the related mouse sequence by five amino acids, and from the related rat sequence by seven amino acids.

Form/Appearance

Lyophilized

Concentration

Adding 0.2 ml of distilled water will yield a concentration of 500 µg/ml.

Storage

Store at -20°C for one year from date of receipt. After reconstitution, at 4°C for one month. It can also be aliquotted and stored frozen at -20°C for six months. Avoid repeated freeze-thaw cycles.

Note

For research use only

Application notes

WB: The detection limit for SLC22A2 is approximately 0.1ng/lane under reducing conditions. Tested Species: In-house tested species with positive results. Predicted Species: Species predicted to be fit for the product based on sequence similarities. By Heat: Boiling the paraffin sections in 10mM citrate buffer, pH6.0, for 20mins is required for the staining of formalin/paraffin sections. Other applications have not been tested. Optimal dilutions should be determined by end users. . Add 0.2ml of distilled water will yield a concentration of 500ug/ml.

Isotype

Rabbit IgG

Clonality

Polyclonal

MW

62581 MW

Uniprot ID

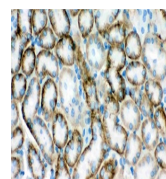
[O15244](#)

Dilution Range

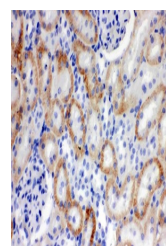
Western blot, 0.1-0.5µg/ml, Mouse, Rat, Human

Expiration Date

12 months from date of receipt.



IHC(P)
analysis of
Mouse Kidney
Tissue u...



IHC(P)
analysis of Rat
Kidney Tissue
usi...



Western blot
analysis using
Anti-
SLC22A2...