

Product Datasheet

SLC12A1 Antibody (orb251575)

Description

SLC12A1 Antibody

Species/Host

Rabbit

Reactivity

Human, Monkey, Mouse, Rat

Conjugation

Unconjugated

Tested

IF, IHC, WB

Applications
Immunogen

A synthetic peptide corresponding to a sequence at the N-terminus of human SLC12A1 (52-83aa DEAQKRLRISFRPGNQECYDNFLQSGETAKTD), different from the related mouse sequence by two amino acids, and from the related rat sequence by four amino acids.

Form/Appearance

Lyophilized

Concentration

Adding 0.2 ml of distilled water will yield a concentration of 500 µg/ml.

Storage

Store at -20°C for one year from date of receipt. After reconstitution, at 4°C for one month. It can also be aliquotted and stored frozen at -20°C for six months. Avoid repeated freeze-thaw cycles.

Note

For research use only

Application notes

WB: The detection limit for SLC12A1 is approximately 0.1ng/lane under reducing conditions. Tested Species: In-house tested species with positive results. By Heat: Boiling the paraffin sections in 10mM citrate buffer, pH6.0, for 20mins is required for the staining of formalin/paraffin sections. Other applications have not been tested. Optimal dilutions should be determined by end users. . Add 0.2ml of distilled water will yield a concentration of 500ug/ml.

Isotype

Rabbit IgG

Clonality

Polyclonal

MW

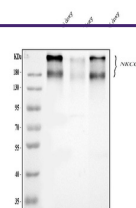
121450 MW

Uniprot ID
Q13621
Dilution Range

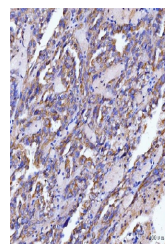
Western blot, 0.25-0.5µg/ml, Monkey, Mouse, Rat
Immunohistochemistry (Paraffin-embedded Section), 2-5µg/ml, Human, Mouse, Rat, By Heat Immunofluorescence, 5 µg/ml, Mouse, Rat

Expiration Date

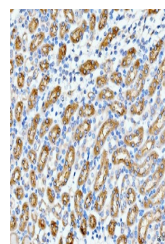
12 months from date of receipt.



WB analysis of SLC12A1 using anti-SLC12A1 antibody



IHC analysis of SLC12A1 using anti-SLC12A1 antibody



IHC analysis of SLC12A1 using anti-SLC12A1 antibody