

## Product Datasheet

### SFTPA1/2 Antibody (orb251573)

## Description

## SFTP1/2 Antibody

### Species/Host

Rabbit

### Reactivity

Human, Mouse, Rat

### Conjugation

Unconjugated

### Tested

IF, IHC, IHC-Fr, WB

### Applications

### Immunogen

A synthetic peptide corresponding to a sequence at the C-terminus of human SFTP1/2 (206-237aa VNYTNWYRGEPAGRGKEQCVMYTDGQWNDNRN), different from the related mouse sequence by four amino acids, and from the related rat sequence by five amino acids.

### Form/Appearance

Lyophilized

### Concentration

Adding 0.2 ml of distilled water will yield a concentration of 500 µg/ml.

### Storage

Store at -20°C for one year from date of receipt. After reconstitution, at 4°C for one month. It can also be aliquotted and stored frozen at -20°C for six months. Avoid repeated freeze-thaw cycles.

### Note

For research use only

### Application notes

WB: The detection limit for SFTP1/2 is approximately 0.1ng/lane under reducing conditions. Tested Species: In-house tested species with positive results. By Heat: Boiling the paraffin sections in 10mM citrate buffer, pH6.0, for 20mins is required for the staining of formalin/paraffin sections. Other applications have not been tested. Optimal dilutions should be determined by end users. . Add 0.2ml of distilled water will yield a concentration of 500ug/ml.

### Isotype

Rabbit IgG

### Clonality

Polyclonal

### MW

26182 MW

### Uniprot ID

[Q8IWL1](#)

### Sensitivity

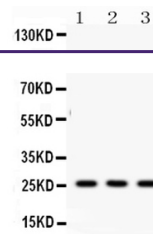
> 5000 cells

### Dilution Range

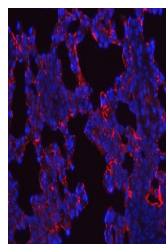
Immunohistochemistry (Frozen Section), 0.5-1µg/ml, Mouse, Rat, -Immunohistochemistry (Paraffin-embedded Section), 0.5-1µg/ml, Human, Mouse, Rat, By HeatWestern blot, 0.1-0.5µg/ml, Human, Mouse, Rat

### Expiration Date

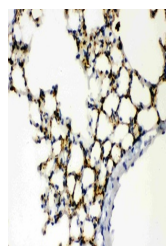
12 months from date of receipt.



WB analysis of SFTP1/2 using anti-SFTP1/2...



IF analysis of SFTP1/2 using anti-SFTP1/2...



IHC analysis of SFTP1/2 using anti-SFTP1/2...