

## Product Datasheet

### Peroxiredoxin 1/PRDX1 Antibody (orb251531)

## Description

Peroxiredoxin 1/PRDX1 Antibody

### Species/Host

Rabbit

### Reactivity

Human, Mouse, Rat

### Conjugation

Unconjugated

### Tested

FC, ICC, IF, IHC, WB

### Applications

### Immunogen

A synthetic peptide corresponding to a sequence in the middle region of human Peroxiredoxin 1 (100-128aa MNIPLVSDPKRTIAQDYGVKADGEGISFR), different from the related mouse sequence by one amino acid, and identical to the related rat sequence.

### Form/Appearance

Lyophilized

### Concentration

Adding 0.2 ml of distilled water will yield a concentration of 500 µg/ml.

### Storage

Store at -20°C for one year from date of receipt. After reconstitution, at 4°C for one month. It can also be aliquotted and stored frozen at -20°C for six months. Avoid repeated freeze-thaw cycles.

### Note

For research use only

### Application notes

WB: The detection limit for Peroxiredoxin 1 is approximately 0.1ng/lane under reducing conditions. Tested Species: In-house tested species with positive results. By Heat: Boiling the paraffin sections in 10mM citrate buffer, pH6.0, for 20mins is required for the staining of formalin/paraffin sections. Other applications have not been tested. Optimal dilutions should be determined by end users. . Add 0.2ml of distilled water will yield a concentration of 500ug/ml.

### Isotype

Rabbit IgG

### Clonality

Polyclonal

### MW

22110 MW

### Uniprot ID

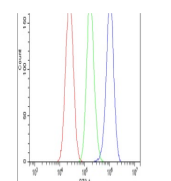
[Q06830](#)

### Dilution Range

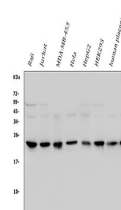
Immunocytochemistry , 0.5-1µg/ml, Human, - Immunohistochemistry (Paraffin-embedded Section), 0.5-1µg/ml, Human, Mouse, Rat, By HeatWestern blot, 0.1-0.5µg/ml, Human, Mouse, RatImmunocytochemistry/Immunofluorescence, 2µg/ml, Human Flow Cytometry, 1-3µg/1x10<sup>6</sup> cells, Human

### Expiration Date

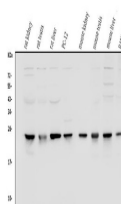
12 months from date of receipt.



Flow Cytometry analysis of HEPG2 cells u...



WB analysis of Peroxiredoxin 1 using ant...



WB analysis of Peroxiredoxin 1 using ant...