

## Product Datasheet

### HSP60 Antibody (orb248380)

## Description

This antibody recognizes a 60 kDa protein, identified as



## Species/Host

Mouse

## Reactivity

Human, Mouse, Rat

## Conjugation

Unconjugated

## Tested

FACS, IF, IHC-P, WB

## Applications

Immunohistochemical analysis of formalin...

## Immunogen

Recombinant human HSP60 was used as the immunogen for this antibody.

## Preservatives

0.2 mg/ml in 1X PBS with 0.1 mg/ml rAlbumin (US sourced) and 0.05% sodium azide

## Storage

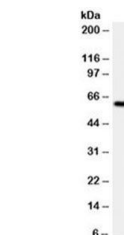
Store the HSP60 antibody at 2-8°C (with azide) or aliquot and store at -20°C or colder (without azide).

## Note

For research use only

## Application notes

The concentration stated for each application is a general starting point. Variations in protocols, secondaries and substrates may require the antibody to be titrated up or down for optimal performance.1. Staining of formalin-fixed tissues is enhanced by boiling tissue sections in pH 9 10mM Tris with 1mM EDTA for 10-20 min followed by cooling at RT for 20 minutes.2. The prediluted format is supplied in a dropper bottle and is optimized for use in IHC. After epitope retrieval step (if required), drip mAb solution onto the tissue section and incubate at RT for 30 min.



Western blot analysis of HeLa cell lysat...

## Formula

0.2 mg/ml in 1X PBS with 0.1 mg/ml BSA (US sourced) and 0.05% sodium azide

## Isotype

Mouse IgG1, kappa

## Clonality

Monoclonal

## Purity

Protein G affinity chromatography

## Hazard

## Information

This HSP60 antibody is available for research use only.

## Entrez

[3329](#)

## Dilution Range

Flow cytometry: 1-2ug/million cells, Immunofluorescence: 1-2ug/ml, Western blot: 1-2ug/ml, Immunohistochemistry (FFPE): 1-2ug/ml for 30 min at RT

## Expiration Date

12 months from date of receipt.