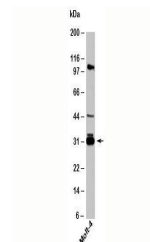


## Product Datasheet

### 14-3-3 sigma Antibody (orb248126)

<b>Description</b>	14-3-3 proteins are regulators of a diverse group of signaling proteins, including kinases, phosphat...
<b>Species/Host</b>	Rabbit
<b>Reactivity</b>	Human, Mouse, Rat
<b>Conjugation</b>	Unconjugated
<b>Tested Applications</b>	WB
<b>Immunogen</b>	A recombinant protein fragment from the internal region of 14-3-3 sigma was used as the immunogen for this antibody. The amino acid sequence is common to the ~30kDa and ~20kDa isoforms.
<b>Preservatives</b>	1X PBS, pH 7.4
<b>Storage</b>	Aliquot the 14-3-3 sigma antibody and store frozen at -20°C or colder. Avoid repeated freeze-thaw cycles.
<b>Note</b>	For research use only
<b>Application notes</b>	Provided assay concentrations are suggestions only, 14-3-3 sigma antibody titration may be required for optimal results.
<b>Formula</b>	0.5 mg/ml with 0.1 mg/ml BSA (US sourced), 0.05% sodium azide
<b>Isotype</b>	Rabbit IgG
<b>Clonality</b>	Polyclonal
<b>Purity</b>	Protein A affinity chromatography
<b>Hazard Information</b>	This 14-3-3 sigma antibody is available for research use only.
<b>Entrez</b>	<b>2810</b>
<b>Dilution Range</b>	Western blot: 1-3ug/ml
<b>Expiration Date</b>	12 months from date of receipt.



Western blot analysis of human samples u...