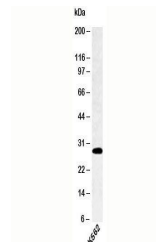


Product Datasheet

SPIB Antibody (orb248109)

Description	SPIB is a transcription factor in the Ets family. It is found in lymphoid cells and not in monocytes...
Species/Host	Rabbit
Reactivity	Human, Mouse
Conjugation	Unconjugated
Tested Applications	WB
Immunogen	A recombinant protein fragment from the C-terminal half of SPIB was used as the immunogen for this antibody.
Preservatives	1X PBS, pH 7.4
Storage	Aliquot and store frozen at -20°C or colder. Avoid repeated freeze-thaw cycles.
Note	For research use only
Application notes	Provided assay concentrations are suggestions only, antibody titration may be required for optimal results.
Formula	0.5 mg/ml with 0.1 mg/ml BSA (US sourced), 0.05% sodium azide
Isotype	Rabbit IgG
Clonality	Polyclonal
Purity	Protein A affinity chromatography
Hazard Information	This SPIB antibody is available for research use only.
Entrez	6689
Dilution Range	Western blot: 4-8ug/ml
Expiration Date	12 months from date of receipt.



Western blot analysis of human samples u...