

## Product Datasheet

# Rabbit IgG Isotype Control Polyclonal Antibody PE Conjugate (orb248104)

**Description** Isotype control antibodies are negative controls used to measure non-specific binding or background ...

**Species/Host** Rabbit

**Conjugation** PE

**Tested Applications** FACS, IF, IHC

**Immunogen** This is purified naive rabbit sera and as such there was no immunogen.

**Preservatives** 1X PBS, pH 7.4

**Form/Appearance** 1X PBS, pH 7.4

**Storage** Store the Rabbit IgG isotype control antibody at 4°C. Do not freeze; protect from light.

**Note** For research use only

**Application notes** Generally to be used at the same concentration as the sample being controlled for.

**Formula** 0.5 mg/ml antibody in PBS with 0.05% sodium azide

**Isotype** Rabbit IgG

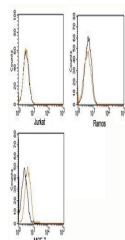
**Clonality** Polyclonal

**Purity** Protein A Affinity Chromatography

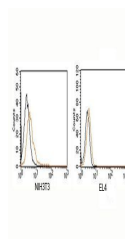
**Hazard Information** This Rabbit IgG isotype control antibody is available for research use only.

**Dilution Range** FACS: assay dependent, IHC: assay dependent, IF: assay dependent

**Expiration Date** 12 months from date of receipt.



FACS staining of human samples using Rab...



FACS staining of mouse samples using Rab...