

## Product Datasheet

### Parkin/PRKN Antibody (orb234353)

## Description

Parkin/PRKN Antibody

### Species/Host

Rabbit

### Reactivity

Human, Mouse, Rat

### Conjugation

Unconjugated

### Tested

ICC, IHC, WB

### Applications

### Immunogen

E.coli-derived human Parkin recombinant protein (Position: I23-K416). Human Parkin shares 82% and 84% amino acid (aa) sequence identity with mouse and rat Parkin, respectively.

### Form/Appearance

Lyophilized

### Concentration

Adding 0.2 ml of distilled water will yield a concentration of 500 µg/ml.

### Storage

Store at -20°C for one year from date of receipt. After reconstitution, at 4°C for one month. It can also be aliquotted and stored frozen at -20°C for six months. Avoid repeated freeze-thaw cycles.

### Note

For research use only

### Application notes

WB: The detection limit for Parkin is approximately 0.2ng/lane under reducing conditions. Tested Species: In-house tested species with positive results. By Heat: Boiling the paraffin sections in 10mM citrate buffer, pH6.0, for 20mins is required for the staining of formalin/paraffin sections. Other applications have not been tested. Optimal dilutions should be determined by end users. . Add 0.2ml of distilled water will yield a concentration of 500ug/ml.

### Isotype

Rabbit IgG

### Clonality

Polyclonal

### MW

51641 MW

### Uniprot ID

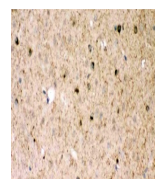
[O60260](https://www.uniprot.org/entry/O60260)

### Dilution Range

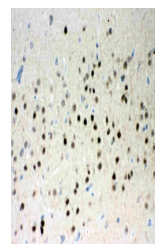
Immunocytochemistry , 0.5-1µg/ml, Mouse, - Immunohistochemistry (Paraffin-embedded Section), 0.5-1µg/ml, Human, Mouse, Rat, By HeatWestern blot, 0.1-0.5µg/ml, Human, Mouse, Rat

### Expiration Date

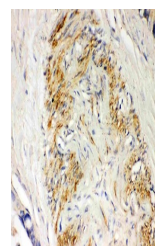
12 months from date of receipt.



IHC(P)  
analysis of  
Mouse Brain  
Tissue us...



IHC(P)  
analysis of  
Rat Brain  
Tissue usin...



IHC(P)  
analysis of  
Human  
Intestinal  
Canc...