

Product Datasheet

Neuropeptide Y/NPY Antibody (orb234342)

Description

Neuropeptide Y/NPY Antibody

Species/Host

Rabbit

Reactivity

Human, Mouse, Rat

Conjugation

Unconjugated

Tested

IHC, WB

Applications
Immunogen

A synthetic peptide corresponding to a sequence in the middle region of human Neuropeptide Y (29-64aa YPSKPDNPGEDAPAEDMARYYSALRHYINLITRQRY), identical to the related mouse and rat sequences.

Form/Appearance

Lyophilized

Concentration

Adding 0.2 ml of distilled water will yield a concentration of 500 µg/ml.

Storage

Store at -20°C for one year from date of receipt. After reconstitution, at 4°C for one month. It can also be aliquotted and stored frozen at -20°C for six months. Avoid repeated freeze-thaw cycles.

Note

For research use only

Application notes

WB: The detection limit for Neuropeptide Y is approximately 0.1ng/lane under reducing conditions. Tested Species: In-house tested species with positive results. Predicted Species: Species predicted to be fit for the product based on sequence similarities. By Heat: Boiling the paraffin sections in 10mM citrate buffer, pH6.0, for 20mins is required for the staining of formalin/paraffin sections. Other applications have not been tested. Optimal dilutions should be determined by end users. . Add 0.2ml of distilled water will yield a concentration of 500ug/ml.

Isotype

Rabbit IgG

Clonality

Polyclonal

MW

10851 MW

Uniprot ID
P01303
Dilution Range

Immunohistochemistry (Paraffin-embedded Section), 0.5-1µg/ml, Mouse, Rat, Human, By Heat Western blot, 0.1-0.5µg/ml, Human

Expiration Date

12 months from date of receipt.

97KD —

40KD —

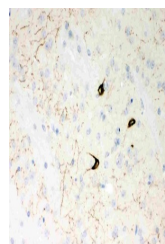
29KD —

20KD —

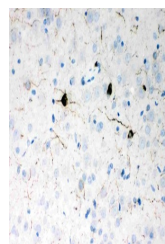
14KD —

8KD —

WB analysis of Recombinant Human Neurope...



IHC(P) analysis of Mouse Brain Tissue us...



IHC(P) analysis of Rat Brain Tissue usin...