

## Product Datasheet

### MSH2 Antibody (orb234330)

## Description

## MSH2 Antibody

### Species/Host

Rabbit

### Reactivity

Human, Mouse, Rat

### Conjugation

Unconjugated

### Tested

FC, ICC, IF, IHC, IHC-Fr, WB

### Applications

### Immunogen

E.coli-derived human MSH2 recombinant protein (Position: Q337-N583). Human MSH2 shares 94% and 93% amino acid (aa) sequence identity with mouse and rat MSH2, respectively.

### Form/Appearance

Lyophilized

### Concentration

Adding 0.2 ml of distilled water will yield a concentration of 500 µg/ml.

### Storage

Store at -20°C for one year from date of receipt. After reconstitution, at 4°C for one month. It can also be aliquotted and stored frozen at -20°C for six months. Avoid repeated freeze-thaw cycles.

### Note

For research use only

### Application notes

WB: The detection limit for MSH2 is approximately 0.2ng/lane under reducing conditions. Tested Species: In-house tested species with positive results. By Heat: Boiling the paraffin sections in 10mM citrate buffer, pH6.0, for 20mins is required for the staining of formalin/paraffin sections. Other applications have not been tested. Optimal dilutions should be determined by end users. . Add 0.2ml of distilled water will yield a concentration of 500ug/ml.

### Isotype

Rabbit IgG

### Clonality

Polyclonal

### MW

104743 MW

### Uniprot ID

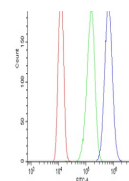
**P43246**

### Dilution Range

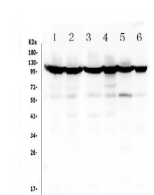
Western blot, 0.1-0.5µg/ml, Human, Mouse, Rat  
Immunohistochemistry (Paraffin-embedded Section), 0.5-1µg/ml, Human, Mouse, Rat, By Heat Immunohistochemistry (Frozen Section), 0.5-1µg/ml, Human  
Immunocytochemistry/Immunofluorescence, 2µg/ml, Human  
Flow Cytometry, 1-3µg/1x10<sup>6</sup> cells, Human

### Expiration Date

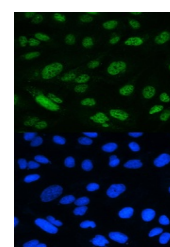
12 months from date of receipt.



Flow  
Cytometry  
analysis of  
A431 cells us...



WB analysis of  
MSH2 using  
anti-MSH2  
anti...



IF analysis of  
MSH2 using  
anti-MSH2  
anti...