

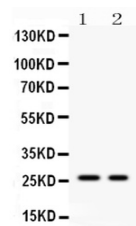
Product Datasheet

Kallikrein 4/KLK4 Antibody (orb234306)

Description	Kallikrein 4/KLK4 Antibody
Species/Host	Rabbit
Reactivity	Human
Conjugation	Unconjugated
Tested Applications	WB
Immunogen	E.coli-derived human Kallikrein 4 recombinant protein (Position: I31-S254).
Form/Appearance	Lyophilized
Concentration	Adding 0.2 ml of distilled water will yield a concentration of 500 µg/ml.
Storage	Store at -20°C for one year from date of receipt. After reconstitution, at 4°C for one month. It can also be aliquotted and stored frozen at -20°C for six months. Avoid repeated freeze-thaw cycles.
Note	For research use only
Application notes	WB: The detection limit for Kallikrein 4 is approximately 0.25ng/lane under reducing conditions. Tested Species: In-house tested species with positive results. Other applications have not been tested. Optimal dilutions should be determined by end users. . Add 0.2ml of distilled water will yield a concentration of 500ug/ml.
Isotype	Rabbit IgG
Clonality	Polyclonal
MW	27032 MW
Uniprot ID	Q9Y5K2
Dilution Range	Western blot, 0.1-0.5µg/ml, Human
Expiration Date	12 months from date of receipt.



WB analysis of
Recombinant
Human
Kallikr...



WB analysis
using Anti-
Kallikrein
4/KLK4...