

Product Datasheet

Glutathione Peroxidase 1/GPX1 Antibody (orb215957)

Description

Glutathione Peroxidase 1/GPX1 Antibody

Species/Host

Rabbit

Reactivity

Human, Mouse, Rat

Conjugation

Unconjugated

Tested

IHC, WB

Applications
Immunogen

A synthetic peptide corresponding to a sequence in the middle region of human GPX1 (116-146aa EVNGAGAHPLFAFLREALPAPSDDATALMTD), different from the related mouse sequence by six amino acids and from the related rat sequence by five amino acids.

Form/Appearance

Lyophilized

Concentration

Adding 0.2 ml of distilled water will yield a concentration of 500 µg/ml.

Storage

Store at -20°C for one year from date of receipt. After reconstitution, at 4°C for one month. It can also be aliquotted and stored frozen at -20°C for six months. Avoid repeated freeze-thaw cycles.

Note

For research use only

Application notes

WB: The detection limit for GPX1 is approximately 0.25ng/lane under reducing conditions. Tested Species: In-house tested species with positive results. By Heat: Boiling the paraffin sections in 10mM citrate buffer, pH6.0, for 20mins is required for the staining of formalin/paraffin sections. Other applications have not been tested. Optimal dilutions should be determined by end users. . Add 0.2ml of distilled water will yield a concentration of 500ug/ml.

Isotype

Rabbit IgG

Clonality

Polyclonal

MW

22088 MW

Uniprot ID

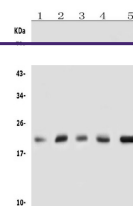
P07203

Dilution Range

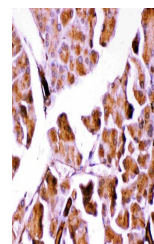
Western blot, 0.1-0.5µg/ml, Human, Mouse, Rat
Immunohistochemistry (Paraffin-embedded Section), 2-5µg/ml, Human, Rat, By Heat

Expiration Date

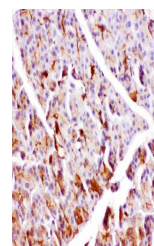
12 months from date of receipt.



WB analysis of GPX1 using anti-GPX1 anti...



IHC analysis of GPX1 using anti-GPX1 ant...



IHC analysis of GPX1 using anti-GPX1 ant...