

## Product Datasheet

### GCLC Antibody (orb215955)

## Description

GCLC Antibody

### Species/Host

Rabbit

### Reactivity

Human, Mouse, Rat

### Conjugation

Unconjugated

### Tested

FC, IHC, WB

### Applications

### Immunogen

E.coli-derived human GCLC recombinant protein (Position: E437-N637). Human GCLC shares 94% amino acid (aa) sequence identity with both mouse and rat GCLC.

### Form/Appearance

Lyophilized

### Concentration

Adding 0.2 ml of distilled water will yield a concentration of 500 µg/ml.

### Storage

Store at -20°C for one year from date of receipt. After reconstitution, at 4°C for one month. It can also be aliquotted and stored frozen at -20°C for six months. Avoid repeated freeze-thaw cycles.

### Note

For research use only

### Application notes

WB: The detection limit for GCLC is approximately 0.2ng/lane under reducing conditions. Tested Species: In-house tested species with positive results. By Heat: Boiling the paraffin sections in 10mM citrate buffer, pH6.0, for 20mins is required for the staining of formalin/paraffin sections. Other applications have not been tested. Optimal dilutions should be determined by end users. . Add 0.2ml of distilled water will yield a concentration of 500ug/ml.

### Isotype

Rabbit IgG

### Clonality

Polyclonal

### MW

72766 MW

### Uniprot ID

**P48506**

### Dilution Range

Western blot, 0.1-0.5µg/ml, Human, Mouse, Rat  
Immunohistochemistry (Paraffin-embedded Section), 2-5µg/ml, Human, By Heat Flow Cytometry (Fixed), 1-3µg/1x10<sup>6</sup> cells, Human

### Expiration Date

12 months from date of receipt.

100KD —

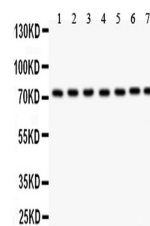
55KD —

35KD —

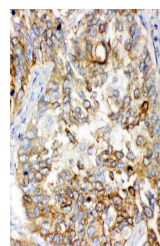
25KD —

15KD —

WB analysis of GCLC using anti-GCLC anti...



WB analysis of GCLC using anti-GCLC anti...



IHC analysis of GCLC using anti-GCLC ant...