

## Product Datasheet

### Angiotensin Converting Enzyme 1/ACE Antibody (orb215879)

## Description

## Angiotensin Converting Enzyme 1/ACE Antibody

### Species/Host

Rabbit

### Reactivity

Human, Mouse, Rat

### Conjugation

Unconjugated

### Tested

ICC, IF, IHC, IHC-Fr, WB

### Applications

### Immunogen

E.coli-derived human ACE recombinant protein (Position: K651-Y864). Human ACE shares 73% and 76% amino acid (aa) sequences identity with mouse and rat ACE, respectively.

### Form/Appearance

Lyophilized

### Concentration

Adding 0.2 ml of distilled water will yield a concentration of 500 µg/ml.

### Storage

Store at -20°C for one year from date of receipt. After reconstitution, at 4°C for one month. It can also be aliquotted and stored frozen at -20°C for six months. Avoid repeated freeze-thaw cycles.

### Note

For research use only

### Application notes

WB: The detection limit for ACE is approximately 0.25ng/lane under reducing conditions. Tested Species: In-house tested species with positive results. By Heat: Boiling the paraffin sections in 10mM citrate buffer, pH6.0, for 20mins is required for the staining of formalin/paraffin sections. Other applications have not been tested. Optimal dilutions should be determined by end users. . Add 0.2ml of distilled water will yield a concentration of 500ug/ml.

### Isotype

Rabbit IgG

### Clonality

Polyclonal

### MW

149715 MW

### Uniprot ID

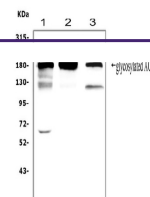
**P12821**

### Dilution Range

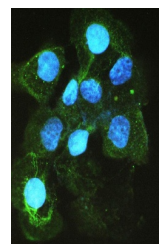
Immunohistochemistry (Frozen Section), 0.5-1µg/ml, Human, -Immunohistochemistry (Paraffin-embedded Section), 0.5-1µg/ml, Human, Mouse, Rat, By HeatWestern blot, 0.1-0.5µg/ml, Human, MouseImmunocytochemistry/Immunofluorescence, 2µg/ml, Human

### Expiration Date

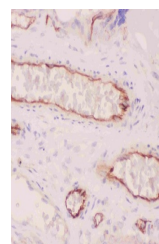
12 months from date of receipt.



WB analysis of ACE using anti-ACE antibody...



IF analysis of ACE using anti-ACE antibody...



IHC analysis of ACE using anti-ACE antibody...