

Product Datasheet

CPT2 antibody (orb20557)

Description

Goat polyclonal antibody to CPT2

Species/Host

Goat

Reactivity

Bovine, Canine, Human, Mouse, Porcine, Rat

Conjugation

Unconjugated

Tested

ELISA, WB

Applications
Target

CPT2 (aa141-154)

Preservatives

Supplied at 0.5 mg/ml in Tris saline, 0.02% sodium azide, pH 7.3 with 0.5% bovine serum albumin. Aliquot and store at -20°C. Minimize freezing and thawing.

Storage

Aliquot and store at -20°C. Minimize freezing and thawing.

Note

For research use only

Application notes

ELISA: Peptide ELISA: antibody detection limit dilution 1:8000. WB: Approx 70kDa band observed in Human and Mouse Liver lysates (calculated MW of 73.8kDa according to Human NP_000089.1 and of 74.0kDa according to Mouse NP_034079.2). Recommended concentration: 1-3 µg/ml. An additional band of unknown identity was also consistently observed at 26kDa. This band was successfully blocked by incubation with the immunizing peptide. We would appreciate any feedback from people in the field - have any such results been reported with other antibodies/lysates Have any further splice variants/modified forms been reported

Protein Sequence

PKSEYNDQLTRATN

Clonality

Polyclonal

MW

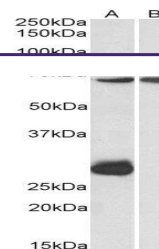
73.8

Entrez
[1376](#)
Dilution Range

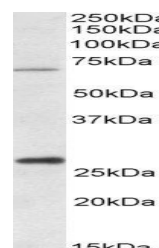
ELISA: 1:16000, WB: 1-3 µg/ml

Expiration Date

12 months from date of receipt.



Western blot analysis of Mouse Heart (La...)



Western blot analysis of Human Liver lys...