

## Product Datasheet

### LARGE antibody (orb20535)

**Description**

Goat polyclonal antibody to LARGE

**Species/Host**

Goat

**Reactivity**

Bovine, Human, Mouse, Rat

**Conjugation**

Unconjugated

**Tested**

ELISA

**Applications**
**Target**

LARGE (N-terminus)

**Preservatives**

Supplied at 0.5 mg/ml in Tris saline, 0.02% sodium azide, pH 7.3 with 0.5% bovine serum albumin. Aliquot and store at -20°C. Minimize freezing and thawing.

**Storage**

Aliquot and store at -20°C. Minimize freezing and thawing.

**Note**

For research use only

**Application notes**

ELISA: Peptide ELISA: antibody detection limit dilution 1:32000.WB: Preliminary experiments gave an approx 125kDa band in Human Kidney, Pancreas and Placenta lysates after 0.5 µg/ml antibody staining. Please note that currently we cannot find an explanation in the literature for the band we observe given the calculated size of 88.1kDa according to NP\_004728.1. The 125kDa band was successfully blocked by incubation with the immunizing peptide. We would appreciate any feedback from people in the field - have any results been reported with other antibodies/lysates Have any further splice variants/modified forms been reported

**Protein Sequence**

RYTASSQRERESLE

**Clonality**

Polyclonal

**MW**

88.1

**Entrez**

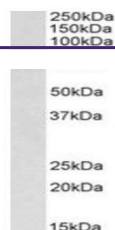
9215

**Dilution Range**

ELISA: 1:32000, WB: 0.5 µg/ml

**Expiration Date**

12 months from date of receipt.



Western blot analysis of Human Kidney ly...