

Product Datasheet

ZGLP1 antibody (orb20531)

Description

GLP1 peptide

Species/Host

Goat

Reactivity

Bovine, Human, Mouse

Conjugation

Unconjugated

Tested

Applications

ELISA, FC, IF

Target

ZGLP1

Preservatives

Supplied at 0.5 mg/ml in Tris saline, 0.02% sodium azide, pH 7.3 with 0.5% bovine serum albumin. Aliquot and store at -20°C. Minimize freezing and thawing.

Storage

Aliquot and store at -20°C. Minimize freezing and thawing.

Note

For research use only

Application notes

ELISA: Peptide ELISA: antibody detection limit dilution 1:8000. WB: Preliminary experiments gave an approx 35kDa band in Human Testis lysates after 1 µg/ml antibody staining. Please note that currently we cannot find an explanation in the literature for the band we observe given the calculated size of 29.6kDa according to NP_001096637.1. The 35kDa band was successfully blocked by incubation with the immunizing peptide. We would appreciate any feedback from people in the field - have any results been reported with other antibodies/lysates Have any further splice variants/modified forms been reported

Protein Sequence

EGVTLKFQIKPDS

Clonality

Polyclonal

MW

29.6

Entrez

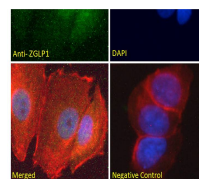
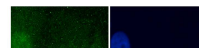
[100125288](#)

Dilution Range

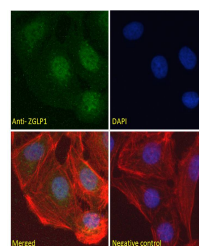
ELISA: 1:8000, WB: 1 µg/ml, IHC-P: 10ug/ml

Expiration Date

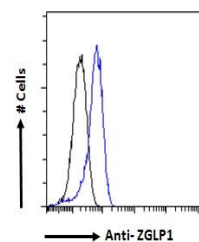
12 months from date of receipt.



Immunofluorescence analysis of MCF7 cell...



Immunofluorescence analysis of U2OS cell...



Flow cytometric analysis of K562 cells u...