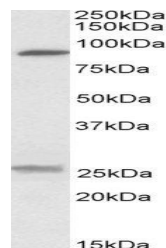


## Product Datasheet

### SLC4A11 antibody (orb20394)

<b>Description</b>	Goat polyclonal antibody to SLC4A11
<b>Species/Host</b>	Goat
<b>Reactivity</b>	Bovine, Canine, Human, Mouse, Rat
<b>Conjugation</b>	Unconjugated
<b>Tested Applications</b>	ELISA, IHC, WB
<b>Target</b>	SLC4A11 / BTR1
<b>Preservatives</b>	Supplied at 0.5 mg/ml in Tris saline, 0.02% sodium azide, pH 7.3 with 0.5% bovine serum albumin. Aliquot and store at -20°C. Minimize freezing and thawing.
<b>Storage</b>	Aliquot and store at -20°C. Minimize freezing and thawing.
<b>Note</b>	For research use only
<b>Application notes</b>	ELISA: Peptide ELISA: antibody detection limit dilution 1:32000.WB: Approx 90kDa band observed in Human, Mouse and Rat Kidney lysates (calculated MW of 99.6kDa according to NP_114423.1). Recommended concentration: 0.3-1 µg/ml. An additional band of unknown identity was also consistently observed at 26kDa. This band was successfully blocked by incubation with the immunizing peptide. We would appreciate any feedback from people in the field - have any such results been reported with other antibodies/lysates Have any further splice variants/modified forms been reported
<b>Protein Sequence</b>	HTSRKYLKLNFKKE
<b>Clonality</b>	Polyclonal
<b>MW</b>	99.6
<b>Entrez</b>	<b>83959</b>
<b>Dilution Range</b>	ELISA: 1:32000, WB: 0.3-1 µg/ml, IHC-P: 3.75 µg/ml
<b>Expiration Date</b>	12 months from date of receipt.



orb20394  
(0.3ug/ml)  
staining of  
Human Ki...