

## Product Datasheet

### SALL1 antibody (orb20344)

## Description

Goat polyclonal antibody to SALL1

## Species/Host

Goat

## Reactivity

Human, Mouse, Rat

## Conjugation

Unconjugated

## Tested

ELISA

## Applications

## Target

SALL1 (aa29-43)

## Preservatives

Supplied at 0.5 mg/ml in Tris saline, 0.02% sodium azide, pH 7.3 with 0.5% bovine serum albumin. Aliquot and store at -20°C. Minimize freezing and thawing.

## Storage

Aliquot and store at -20°C. Minimize freezing and thawing.

## Note

For research use only

## Application notes

ELISA: Peptide ELISA: antibody detection limit dilution 1:32000.WB: Blot: Preliminary experiments gave an approx 100kDa band in Human Brain (Amygdala and Substantia nigra) and Mouse Kidney lysates after 1 µg/ml antibody staining. Please note that currently we cannot find an explanation in the literature for the band we observe given the calculated size of 140kDa according to Human NP\_002959.2 and Mouse NP\_067365.2, and 130kDa according to Human NP\_001121364.1. The 100kDa band was successfully blocked by incubation with the immunizing peptide. We would appreciate any feedback from people in the field - have any results been reported with other antibodies/lysates Have any further splice variants/modified forms been reported

## Protein Sequence

EKGQPSRPTKSKDAH

## Clonality

Polyclonal

## MW

140; 130

## Entrez

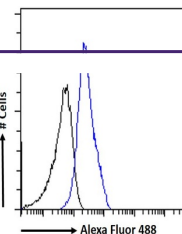
**6299**

## Dilution Range

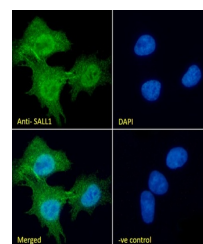
ELISA: 1:32000, WB: 1 µg/ml

## Expiration Date

12 months from date of receipt.



orb20344 Flow  
cytometric analysis  
of par...



orb20344  
Immunofluorescence  
analysis of ...