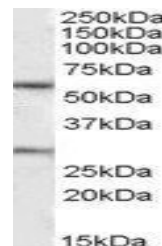


## Product Datasheet

### KCNQ1 antibody (orb20163)

<b>Description</b>	Goat polyclonal antibody to KCNQ1
<b>Species/Host</b>	Goat
<b>Reactivity</b>	Bovine, Canine, Human, Mouse, Rat
<b>Conjugation</b>	Unconjugated
<b>Tested Applications</b>	ELISA, IHC, WB
<b>Target</b>	KCNQ1
<b>Preservatives</b>	Supplied at 0.5 mg/ml in Tris saline, 0.02% sodium azide, pH 7.3 with 0.5% bovine serum albumin. Aliquot and store at -20°C. Minimize freezing and thawing.
<b>Storage</b>	Aliquot and store at -20°C. Minimize freezing and thawing.
<b>Note</b>	For research use only
<b>Application notes</b>	ELISA: Peptide ELISA: antibody detection limit dilution 1:16000.WB: Approx. 60kDa band observed in Human Heart lysates (calculated MW of 61.5kDa according to NP_861463.1). Recommended concentration: 1-3 µg/ml. An additional band of unknown identity was also consistently observed at 28kDa. This band was successfully blocked by incubation with the immunizing peptide. We would appreciate any feedback from people in the field - have any such results been reported with other antibodies/lysates Have any further splice variants/modified forms been reported
<b>Protein Sequence</b>	EQLTVPRRGPEGS
<b>Clonality</b>	Polyclonal
<b>MW</b>	74.7; 61.5
<b>Entrez</b>	<b>3784</b>
<b>Dilution Range</b>	ELISA: 1:16000, WB: 1-3 µg/ml
<b>Expiration Date</b>	12 months from date of receipt.



orb20163  
(1ug/ml)  
staining of  
Human  
Hear...