

## Product Datasheet

### 41708 antibody (orb20002)

**Description**

Goat polyclonal antibody to 41708

**Species/Host**

Goat

**Reactivity**

Bovine, Human, Rat

**Conjugation**

Unconjugated

**Tested**

ELISA, IHC, WB

**Applications**
**Target**

MARCH10

**Preservatives**

Supplied at 0.5 mg/ml in Tris saline, 0.02% sodium azide, pH 7.3 with 0.5% bovine serum albumin. Aliquot and store at -20°C. Minimize freezing and thawing.

**Storage**

Aliquot and store at -20°C. Minimize freezing and thawing.

**Note**

For research use only

**Application notes**

ELISA: Peptide ELISA: antibody detection limit dilution 1:8000. WB: Approx. 90 kDa band observed in Rat Testis lysates (calculated MW of 90.5 kDa according to Human NP\_689811.2 and of 87.9 kDa according to Mouse NP\_766156.2). Recommended concentration: 0.3-1 µg/ml. An additional band of unknown identity was also consistently observed at 37 kDa. This band was successfully blocked by incubation with the immunising peptide. We would appreciate any feedback from people in the field - have any such results been reported with other antibodies/lysates Have any further splice variants/modified forms been reported

**Protein Sequence**

SRNYPQPRTEE

**Clonality**

Polyclonal

**MW**

90.5; 90.5

**Entrez**

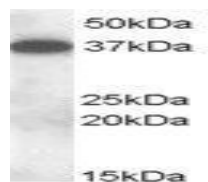
162333

**Dilution Range**

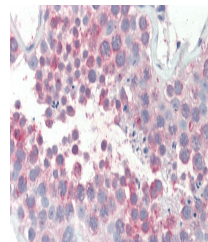
ELISA: 1:8000, WB: 0.3-1 µg/ml, IHC-P: 5 µg/ml

**Expiration Date**

12 months from date of receipt.



orb20002 (0.3ug/ml)  
staining of Rat Test...



Immunohistochemical  
staining of Human  
Te...