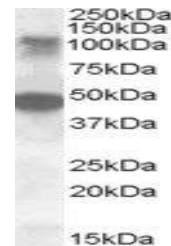


Product Datasheet

LIP1 antibody (orb19999)

Description	Goat polyclonal to LIP1
Species/Host	Goat
Reactivity	Human
Conjugation	Unconjugated
Tested Applications	ELISA, WB
Target	LIP1 / LKB1IP
Preservatives	Supplied at 0.5 mg/ml in Tris saline, 0.02% sodium azide, pH 7.3 with 0.5% bovine serum albumin. Aliquot and store at -20°C. Minimize freezing and thawing.
Storage	Aliquot and store at -20°C. Minimize freezing and thawing.
Note	For research use only
Application notes	ELISA: Peptide ELISA: antibody detection limit dilution 1:64000.WB: Approx. 110 kDa band observed in Human Ovary lysates (calculated MW of 121 kDa according to NP_443134.2). Recommended concentration: 0.3-1 µg/ml. An additional strong band of unknown identity was also consistently observed at 48 kDa. This band was successfully blocked by incubation with the immunising peptide. We would appreciate any feedback from people in the field - have any such results been reported with other antibodies/lysates Have any further splice variants/modified forms been reported
Protein Sequence	SRGTPNRERKQGEQS
Clonality	Polyclonal
MW	121
Entrez	114790
Dilution Range	ELISA: 1:64000, WB: 0.3-1 µg/ml
Expiration Date	12 months from date of receipt.



orb19999
(0.5ug/ml)
staining of
Human Ov...