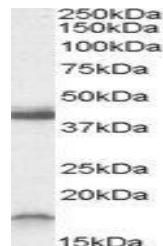


## Product Datasheet

### Ramp1 antibody (orb19922)

<b>Description</b>	Goat polyclonal antibody to Ramp1
<b>Species/Host</b>	Goat
<b>Reactivity</b>	Human, Mouse, Rat
<b>Conjugation</b>	Unconjugated
<b>Tested Applications</b>	ELISA, WB
<b>Target</b>	Ramp1 (C-Term., mouse)
<b>Preservatives</b>	Supplied at 0.5 mg/ml in Tris saline, 0.02% sodium azide, pH 7.3 with 0.5% bovine serum albumin. Aliquot and store at -20°C. Minimize freezing and thawing.
<b>Storage</b>	Aliquot and store at -20°C. Minimize freezing and thawing.
<b>Note</b>	For research use only
<b>Application notes</b>	ELISA: Peptide ELISA: antibody detection limit dilution 1:64000.WB: Experiments gave bands at approx. 18kDa and 40kDa in Rat Brain lysate after 0.3 µg/ml antibody staining. The appearance of a band with much higher molecular weight corresponds to earlier findings in literature with different antibodies (Hilaret, J Biol Chem. 2001 Nov 9;276(45):42182-90.; PMID: 11535606). This protein has a calculated MW of 16.9kDa according to Mouse NP_058590.1 and 16.8kDa according to Rat NP_113833.1. Recommended concentration: 0.3-1 µg/ml.
<b>Protein Sequence</b>	DYQSKRTEGIV
<b>Clonality</b>	Polyclonal
<b>MW</b>	16.9; 11.5
<b>Entrez</b>	<b>10267</b>
<b>Dilution Range</b>	ELISA: 1:64000, WB: 0.3-1 µg/ml
<b>Expiration Date</b>	12 months from date of receipt.



orb19922  
(0.3ug/ml)  
staining of  
Rat Brai...