

Product Datasheet

GPR125 antibody (orb19860)

Description

Goat polyclonal antibody to GPR125

Species/Host

Goat

Reactivity

Human, Mouse

Conjugation

Unconjugated

Tested

ELISA, IHC, WB

Applications

Target

GPR125

Preservatives

Supplied at 0.5 mg/ml in Tris saline, 0.02% sodium azide, pH 7.3 with 0.5% bovine serum albumin. Aliquot and store at -20°C. Minimize freezing and thawing.

Storage

Aliquot and store at -20°C. Minimize freezing and thawing.

Note

For research use only

Application notes

ELISA: Peptide ELISA: antibody detection limit dilution 1:8000. WB: Approx 140kDa band observed in Human Ovary lysates (calculated MW of 146kDa according to NP_660333.2). Recommended concentration: 0.5-1.5 µg/ml. An additional band of unknown identity was also consistently observed at 33kDa. This band was successfully blocked by incubation with the immunising peptide. We would appreciate any feedback from people in the field - have any such results been reported with other antibodies/lysates Have any further splice variants/modified forms been reported

Protein Sequence

CTNKSASSFKNS

Clonality

Polyclonal

MW

146

Entrez

166647

Dilution Range

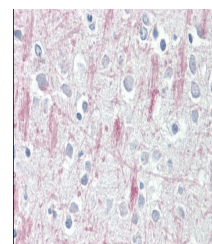
ELISA: 1:8000, WB: 0.5-1.5 µg/ml, IHC-P: 3.75 µg/ml

Expiration Date

12 months from date of receipt.



Western blot analysis of Human Ovary lysates



Immunohistochemical staining of Human Ovary tissue