

Product Datasheet

Mouse IgG1 antibody (orb198405)

Description

Provided as solution in phosphate buffered saline with

Species/Host

Mouse

Reactivity

Mouse

Conjugation

Unconjugated

Tested

FACS

Applications
Concentration

See vial for concentration

Storage

Product should be stored at -20°C. Aliquot to avoid freeze/thaw cycles

Note

For research use only

Application notes

Consult the appropriate fact sheet to determine the amount of antibodies to be used as a control for PBMC or Whole Blood. PBMC: Add 10 µl of MAB/10⁶ PBMC in 100 µl PBS. Mix gently and incubate for 15 minutes at 2^o to 8°C. Wash twice with PBS and analyze. WHOLE BLOOD: Add 10 µl of MAB/100 µl of Whole Blood. Mix gently and incubate for 15 minutes at room temperature 20°C. Lyse the whole blood. Wash once with PBS and analyze. See instrument manufacturer's instructions for Lysed Whole Blood and Immunofluorescence analysis with a flow cytometer or microscope. ALLOPHYCOCYANIN: (APC) conjugates are analyzed in multi-color flow cytometry with instruments equipped with a second laser and proper filters. Laser excitation is at 633 nm with a Helium Neon (HeNe) laser or a 600-640 nm (633nm) range for a Dye laser. Peak fluorescence emission is at 660 nm. RPE-Cy-5 +: Excites at 488nm and emits at 670nm. Store protected from light. Optimal concentration should be evaluated by serial dilutions.

Isotype

IgG1

Clonality

Monoclonal

Uniprot ID

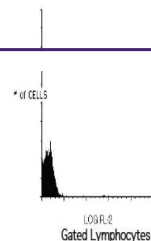
P07750

Hazard
Information

This product is intended FOR RESEARCH USE ONLY, and FOR TESTS IN VITRO, not for use in diagnostic or therapeutic procedures involving humans or animals.

Expiration Date

12 months from date of receipt.



Flow
cytometric
analysis of
Peripheral
b...