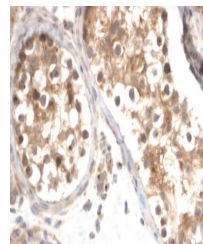


## Product Datasheet

### SALL4 antibody (orb198352)

<b>Description</b>	Rabbit Polyclonal antibody to SALL4
<b>Species/Host</b>	Rabbit
<b>Reactivity</b>	Human
<b>Conjugation</b>	Unconjugated
<b>Tested Applications</b>	IHC, WB
<b>Immunogen</b>	Synthetic peptide derived from the human SALL4 protein
<b>Preservatives</b>	Provided as solution in phosphate buffered saline with 0.08% sodium azide
<b>Form/Appearance</b>	Provided as solution in phosphate buffered saline with 0.08% sodium azide
<b>Concentration</b>	See vial for concentration
<b>Storage</b>	Product should be stored at -20°C. Aliquot to avoid freeze/thaw cycles
<b>Note</b>	For research use only
<b>Application notes</b>	Antibody can be used for Immunohistochemistry (2-4 µg/ml) and Western blotting (1-2 µg/ml). Optimal concentration should be evaluated by serial dilutions.
<b>Isotype</b>	Ig
<b>Uniprot ID</b>	<b>Q9UJQ4</b>
<b>Hazard Information</b>	This product is intended FOR RESEARCH USE ONLY, and FOR TESTS IN VITRO, not for use in diagnostic or therapeutic procedures involving humans or animals.
<b>Expiration Date</b>	12 months from date of receipt.



Immunohistochemical staining of human te...