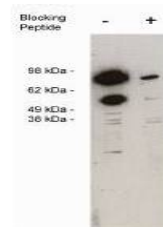


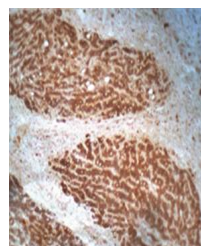
Product Datasheet

SPARC antibody (orb198347)

Description	Rabbit Polyclonal antibody to SPARC
Species/Host	Rabbit
Reactivity	Human
Conjugation	Unconjugated
Tested Applications	ELISA, IHC, WB
Immunogen	Synthetic peptide derived from the human SPARC protein.
Preservatives	Provided as ligand affinity purified antibody in phosphate buffered saline with 0.08% sodium azide
Form/Appearance	Provided as ligand affinity purified antibody in phosphate buffered saline with 0.08% sodium azide
Concentration	Lot specific, see vial
Storage	Product should be stored at -70°C. Aliquot to avoid freeze/thaw cycles
Note	For research use only
Application notes	Antibody can be used for Western blotting (0.5-1 µg/ml). Optimal concentration should be evaluated by serial dilutions.
Uniprot ID	P09486
Hazard Information	This product is intended FOR RESEARCH USE ONLY, and FOR TESTS IN VITRO, not for use in diagnostic or therapeutic procedures involving humans or animals.
Expiration Date	12 months from date of receipt.



Western blot analysis of mouse heart lys...



Immunohistochemical staining of human he...