

## Product Datasheet

### CD2, CD7 antibody (FITC, PE) (orb198126)

**Description**

Mouse Polyclonal antibody to CD2, CD7 (FITC, PE)

**Species/Host**

Mouse

**Reactivity**

Human

**Conjugation**

FITC/RPE

**Tested**

FACS

**Applications**
**Immunogen**

CD2=Derived from the hybridization of mouse Sp2/0 myeloma cells with spleen cells from BALB/c mice immunized with t lymphocytes activated by mixed lymphocyte culture. CD7=Derived from the hybridization of mouse P3-X63-Ag8.653 myeloma cells with spleen cells of BALB/c mice immunized with T-acute lymphoblastic leukemia (T-ALL) cells.

**Preservatives**

Provided as solution in phosphate buffered saline with 0.08% sodium azide and 0.2% carrier protein

**Form/Appearance**

Provided as solution in phosphate buffered saline with 0.08% sodium azide and 0.2% carrier protein

**Concentration**

Titered for flow cytometry

**Storage**

Product should be stored at 4-8°C. DO NOT FREEZE

**Note**

For research use only

**Application notes**

PBMC: Add 10 µl of MAB/10<sup>6</sup> PBMC in 100 µl PBS. Mix gently and incubate for 15 minutes at 2° to 8°C. Wash twice with PBS and analyze or fix with 0.5% v/v of paraformaldehyde in PBS and analyze. WHOLE BLOOD: Add 10 µl of MAB /100 µl of whole blood. Mix gently and incubate for 15 minutes at room temperature 20°C. Lyse the whole blood. Wash once with PBS and analyze or fix with 0.5% v/v of paraformaldehyde in PBS and analyze. See instrument manufacturer's instructions for Lysed Whole Blood and Immunofluorescence analysis with a flow cytometer or microscope.

**Uniprot ID**

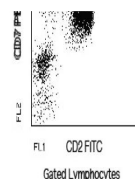
**P06729, P09564**

**Hazard Information**

This product is intended FOR RESEARCH USE ONLY, and FOR TESTS IN VITRO, not for use in diagnostic or therapeutic procedures involving humans or animals.

**Expiration Date**

12 months from date of receipt.



Flow  
cytometric  
analysis of  
Peripheral  
b...