

Product Datasheet

RPL22 antibody (orb19675)

Description

Goat polyclonal antibody to RPL22

Species/Host

Goat

Reactivity

Human, Mouse, Rat

Conjugation

Unconjugated

Tested

ELISA, IHC

Applications

Target

Ribosomal protein L22

Preservatives

Supplied at 0.5 mg/ml in Tris saline, 0.02% sodium azide, pH 7.3 with 0.5% bovine serum albumin. Aliquot and store at -20°C. Minimize freezing and thawing.

Concentration

3-6 µg/ml

Storage

Aliquot and store at -20°C. Minimize freezing and thawing.

Note

For research use only

Application notes

ELISA: Peptide ELISA: antibody detection limit dilution 1:16000.WB: Preliminary experiments gave bands at approx 17-18kDa and 25kDa in Human Liver lysates after 0.5 µg/ml antibody staining. Please note that currently we cannot find an explanation in the literature for the bands we observe given the calculated size of 14.8kDa according to NP_000974.1. Both detected bands were successfully blocked by incubation with the immunizing peptide (and BLAST results with the immunizing peptide sequence did not identify any other proteins to explain the additional bands). We would appreciate any feedback from people in the field - have any results been reported with other antibodies/lysates Have any further splice variants/modified forms been reported

Protein Sequence

SKESYELRYFQINQ

Clonality

Polyclonal

MW

14.8

Entrez

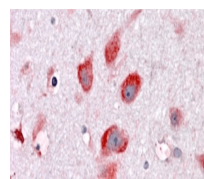
6146

Dilution Range

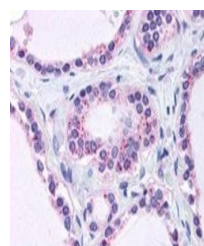
ELISA: 1:16000, WB: 0.5 µg/ml, IHC-P: 3.75 µg/ml

Expiration Date

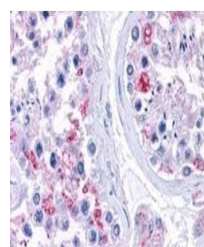
12 months from date of receipt.



Immunohistochemical staining of Human Co...



Immunohistochemical staining of Human Th...



Immunohistochemical staining of Human Te...