

## Product Datasheet

### PTBP2 antibody (orb19658)

## Description

Goat polyclonal antibody to PTBP2

## Species/Host

Goat

## Reactivity

Bovine, Human, Mouse, Rat

## Conjugation

Unconjugated

## Tested

ELISA, IF, WB

## Applications

## Target

PTBP2

## Preservatives

Supplied at 0.5 mg/ml in Tris saline, 0.02% sodium azide, pH 7.3 with 0.5% bovine serum albumin. Aliquot and store at -20°C. Minimize freezing and thawing.

## Storage

Aliquot and store at -20°C. Minimize freezing and thawing.

## Note

For research use only

## Application notes

ELISA: Peptide ELISA: antibody detection limit dilution 1:1000. WB: Preliminary experiments gave an approx 35kDa band in lysates of cell line NIH3T3 after 0.1 µg/ml antibody staining. Please note that currently we cannot find an explanation in the literature for the band we observe given the calculated size of 57.5kDa according to NP\_067013.1. The 35kDa band was successfully blocked by incubation with the immunizing peptide. We would appreciate any feedback from people in the field - have any results been reported with other antibodies/lysates Have any further splice variants/modified forms been reported

## Protein Sequence

SKKFKGEDKMD

## Clonality

Polyclonal

## MW

58.1; 58.6; 59.6; 58.0; 57.6; 57.5

## Entrez

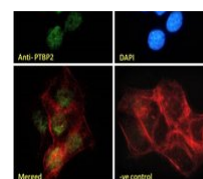
**58155**

## Dilution Range

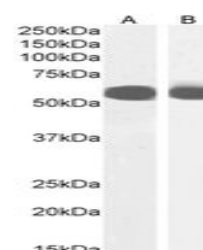
ELISA: 1:1000, WB: 2-3µg/ml, IF/ICC: 10µg/ml

## Expiration Date

12 months from date of receipt.



Immunofluorescence analysis of paraforma...



Western blot analysis of Mouse Testes (A...