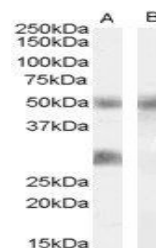


## Product Datasheet

### IGFBP3 antibody (orb19656)

<b>Description</b>	Goat polyclonal antibody to IGFBP3
<b>Species/Host</b>	Goat
<b>Reactivity</b>	Canine, Human, Mouse, Rat
<b>Conjugation</b>	Unconjugated
<b>Tested Applications</b>	ELISA, WB
<b>Target</b>	IGFBP3
<b>Preservatives</b>	Supplied at 0.5 mg/ml in Tris saline, 0.02% sodium azide, pH 7.3 with 0.5% bovine serum albumin. Aliquot and store at -20°C. Minimize freezing and thawing.
<b>Storage</b>	Aliquot and store at -20°C. Minimize freezing and thawing.
<b>Note</b>	For research use only
<b>Application notes</b>	ELISA: Peptide ELISA: antibody detection limit dilution 1:64000.WB: Approx 28kDa band observed in Human Breast cancer lysates (calculated MW of 31.7kDa according to NP_001013416.1 and 32.2kDa according to NP_000589.2). Recommended concentration: 0.02-0.06 µg/ml. An additional band of 50kDa was consistently observed, however this band was not blocked by the immunizing peptide and it is therefore a non-specific signal. We call for caution when used for other assays than Western blot.
<b>Protein Sequence</b>	RYKVDYESQSTDTQN
<b>Clonality</b>	Polyclonal
<b>MW</b>	31.7; 32.2
<b>Entrez</b>	<b>3486</b>
<b>Dilution Range</b>	ELISA: 1:64000, WB: 0.02-0.06 µg/ml
<b>Expiration Date</b>	12 months from date of receipt.



orb19656  
(0.02ug/ml)  
staining of  
Human B...